



**ELECTROLUX HOME PRODUCTS PTY LTD**  
ABN 51 004 762 341

Technical Publication N° DW212

Issue: 2  
Date: 06/09

**WEB SITE ADDRESS: [www.partnship.com.au](http://www.partnship.com.au)**

# ***WESTINGHOUSE***

## ***HOUSEHOLD DISHWASHER***

### ***MODELS:***

**WDF901SA**  
**PNC 911915304 00**  
**WDF901WA**  
**PNC 911915303 00**

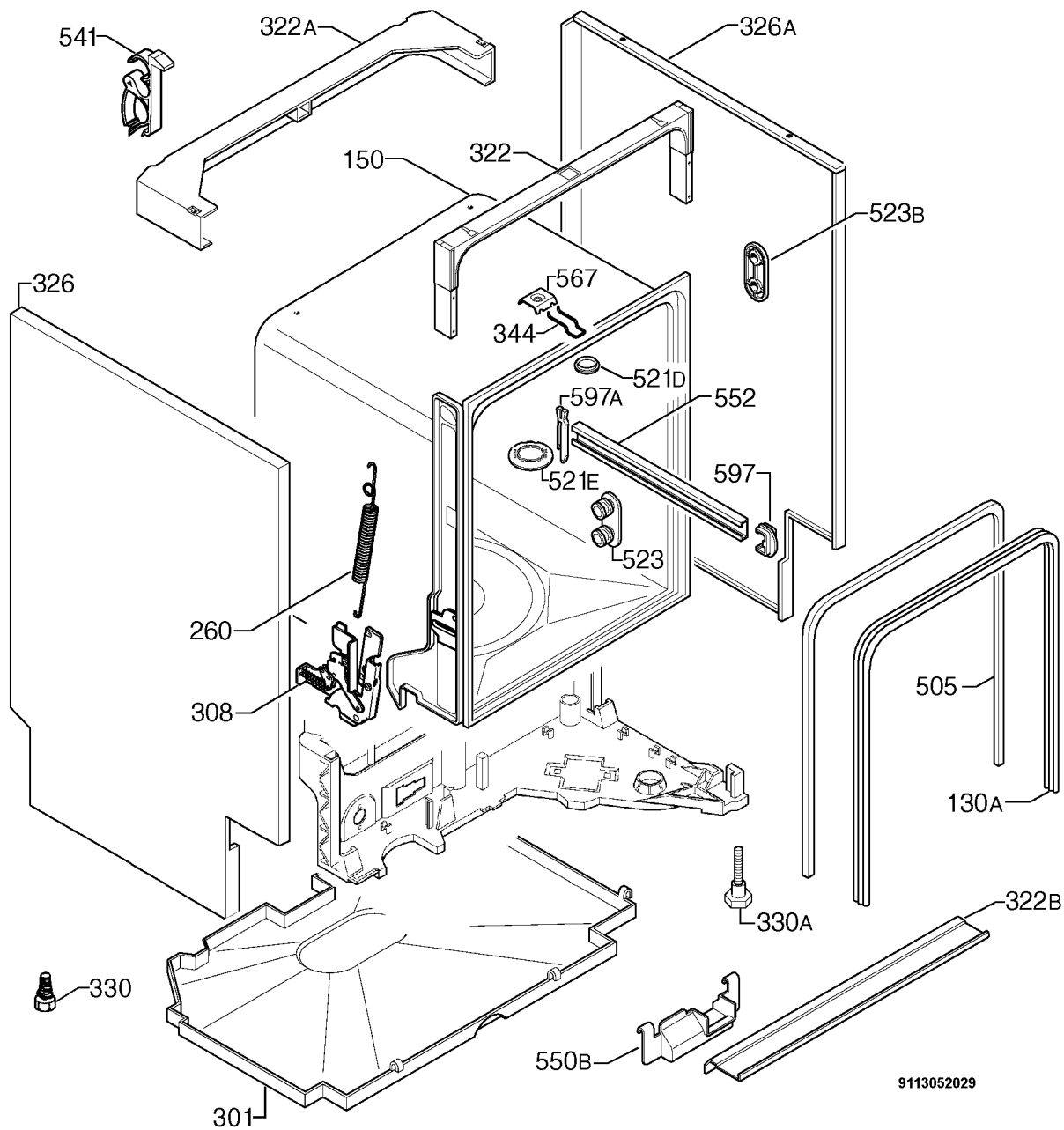
VARIANT CHANGE SUMMARY	
00	INTRODUCTION

Release Dates:	
WDF901SA	01/04/2009
WDF901WA	01/04/2009

<b>CONTENTS</b>	<b>PAGE N°</b>
<b>VARIANT CHANGE SUMMARY and RELEASE DATES</b>	<b>2</b>
<b>CONTENTS</b>	<b>3</b>
<b>CABINET and BASE ASSEMBLY</b>	<b>4 &amp; 5</b>
<b>DOOR ASSEMBLY</b>	<b>6 &amp; 7</b>
<b>PUMP, SUMP and HYDRAULIC SYSTEM</b>	<b>8 &amp; 9</b>
<b>ELECTRICAL COMPONENTS</b>	<b>10 &amp; 11</b>
<b>PANEL TOP and CONTROL PANEL ASSEMBLY</b>	<b>12 &amp; 13</b>
<b>BASKET ASSEMBLY</b>	<b>14 &amp; 15</b>
<b>WIRING DIAGRAM and LEGEND</b>	<b>16 &amp; 17</b>
<b>CIRCUIT DIAGRAM (CONTROL BOARD)</b>	<b>18</b>
<b>GENERAL CHARACTERISTICS and CONTROL PANEL</b>	<b>19 &amp; 20</b>
<b>COMPONENT TEST MEASUREMENT POINTS</b>	<b>21</b>
<b>TABLE OF ALARMS</b>	<b>22 &amp; 23</b>
<b>ACCESSING DIAGNOSTIC MODE and READING ALARMS (EDW1500)</b>	<b>24 &amp; 25</b>
<b>OPTIONS AVAILABLE TO SERVICE TECHNICIANS</b>	<b>25 &amp; 26</b>

**NOTE: In Parts Listings**

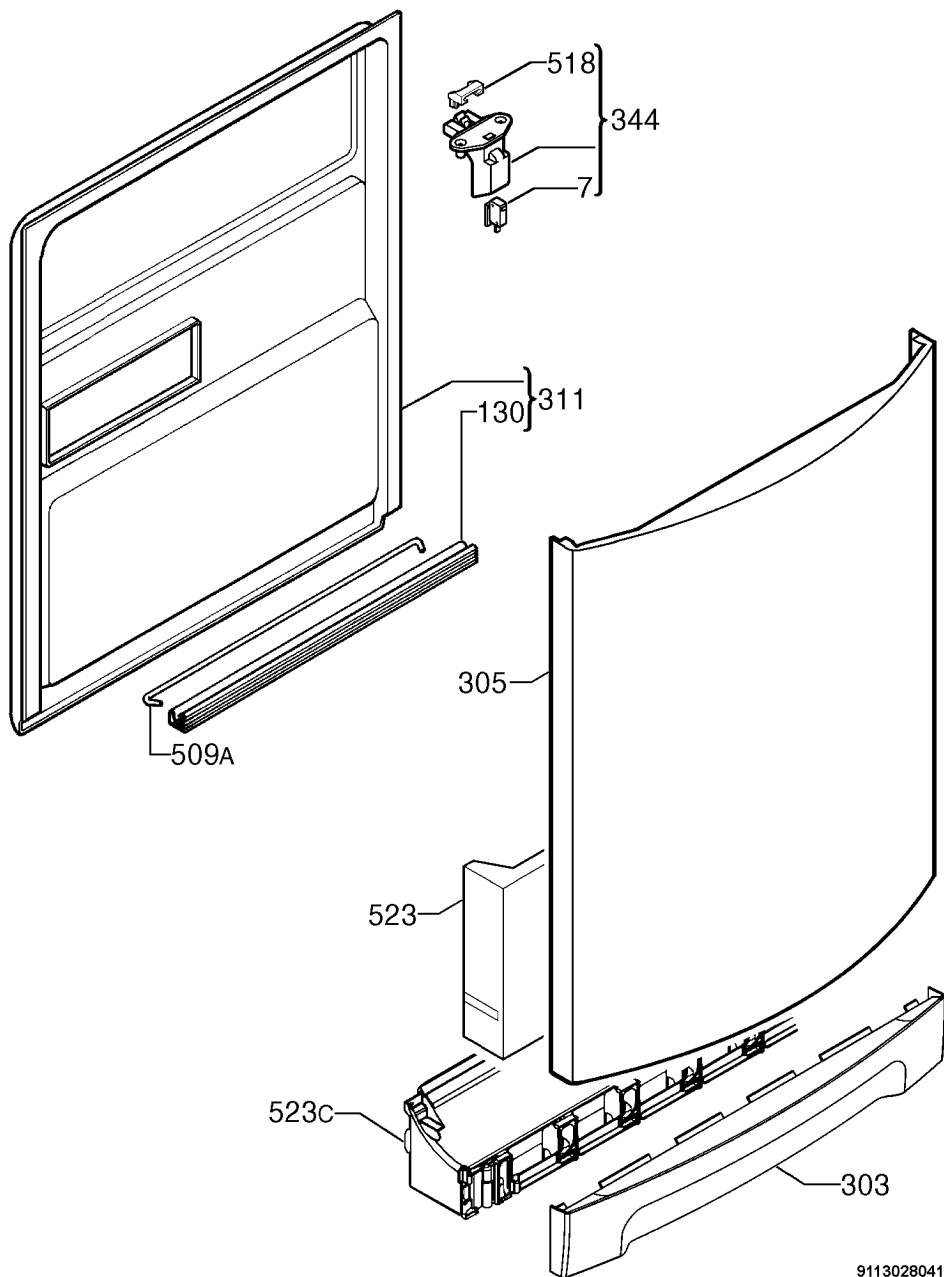
**N.I. = Not Illustrated**  
**N.P.A. = No Part Available**  
**N.P.N. = Not Used on this Model**



<b>MODELS</b>	<b>PNC</b>	<b>VAR</b>
<b>WDF901SA</b>	<b>911915304</b>	<b>00</b>
<b>WDF901WA</b>	<b>911915303</b>	<b>00</b>

**Exp View N°. P09113052029**  
**CABINET and BASE ASSEMBLY**

ITEM	PART N°.	SA	WA	DESCRIPTION
130A	1171265-01/8	1	1	Sealing,outer x 1730mm
150	N.P.A.	-	-	Tub
260	1526645-12/0	2	2	Spring,hinge
301	1526298-07/8	1	1	Bottom,cabinet
308	50286354-00/1	1	1	Kit,Door hinge,right-left
322	1525280-35/8	1	1	Crossbar,front,upper
322A	1170350-01/9	1	1	Crossbar,back,upper
322B	1527256-10/9	1	1	Crossbar,front,bottom
326	1171933-40/9	1	-	Side panel,left - black
	1170380-81/8	-	1	Side panel,left - white
326A	1171933-50/8	1	-	Side panel,right - black
	1170380-91/7	-	1	Side panel,right - white
330	1521870-01/2	1	1	Adjustable foot
330A	1527992-02/6	2	2	Adjustable foot,front x 30mm
344	1522344-05/8	1	1	Latch
505	N.P.A.	-	-	Trimming,tub,cabinet
521D	1526576-00/2	1	1	Hole cover,latch
521E	1527051-10/4	1	1	Hole cover,tub
523	50299970-00/9	1	1	Wheel support kit - dark grey (4 pieces)
523B	1521220-10/1	1	1	Stiffening,holder,roller
541	1526417-00/9	1	1	Hose clamp
550B	1522345-03/0	1	1	Wiring protection
552	1170542-00/3	2	2	Rail basket,upper
567	1523236-03/0	1	1	Plaque
597	1520479-30/2	2	2	Basket stop,front - dark grey
597A	8996461234057	2	2	Stopper,back - dark grey
N.I.	50282092-00/1	1	1	Fixing clip,stud (4 pieces)

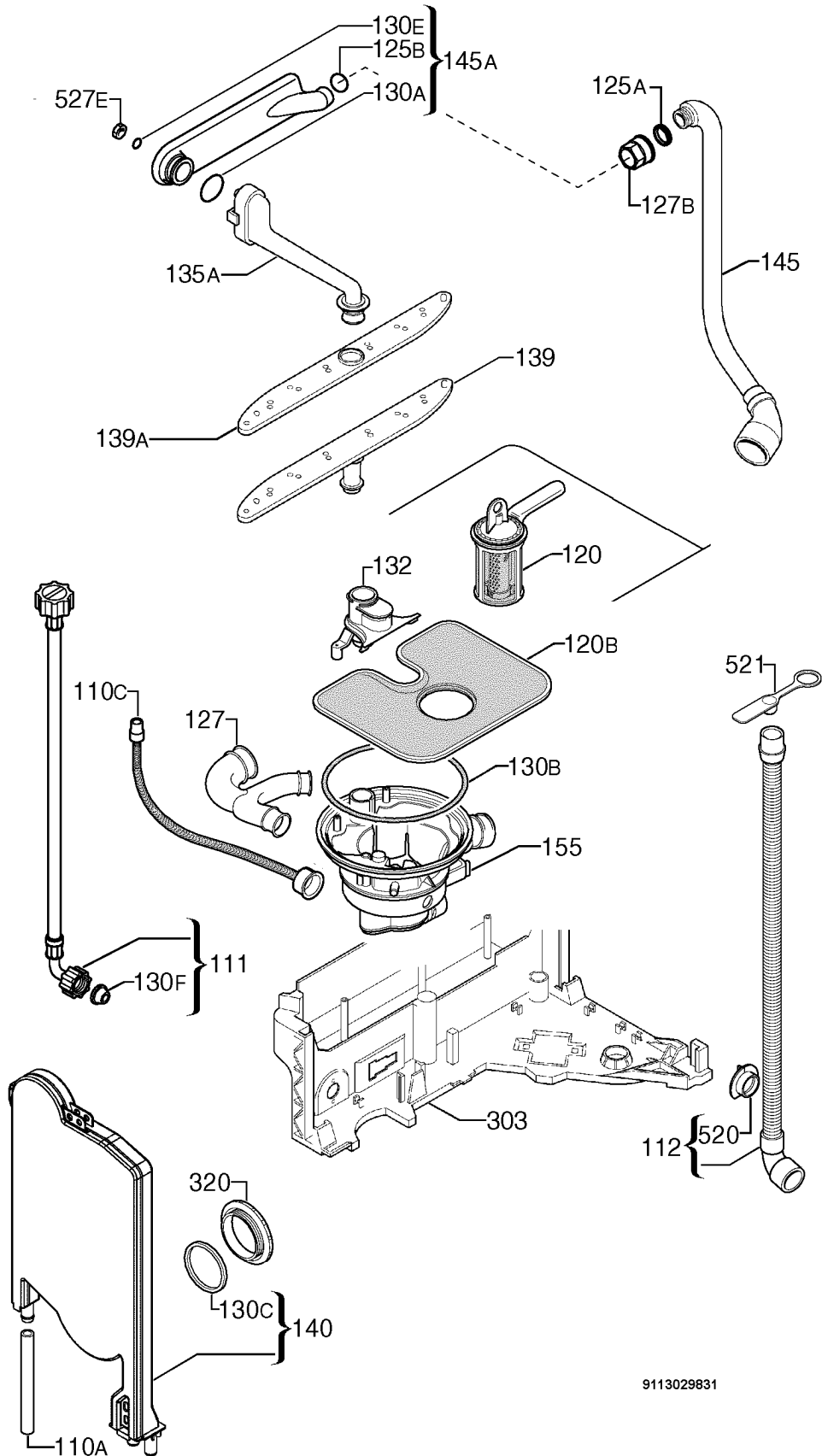


<b>MODELS</b>	<b>PNC</b>	<b>VAR</b>
<b>WDF901SA</b>	<b>911915304</b>	<b>00</b>
<b>WDF901WA</b>	<b>911915303</b>	<b>00</b>

**Exp View N°. P09113028041**

**DOOR ASSEMBLY**

ITEM	PART N°.	SA	WA	DESCRIPTION
7	50287927-00/3	1	1	Microswitch,door
130	1527401-00/2	1	1	Door gasket,bottom - black x 550mm
303	1529331-40/5	1	-	Plinth
	1529331-90/0	-	1	Plinth - White
305	1170296-22/0	1	-	Door - Inox
	1170296-11/3	-	1	Door - White
311	50281303-00/3	1	1	Inner door,complete
344	1526377-05/4	1	1	Latch,bridging plug,complete
509A	1520419-14/2	1	1	Tie,hinge
518	1526414-02/2	1	1	Bridge,door lock
523	1529407-00/7	1	1	Stiffening,door
523C	1171113-04/4	1	1	Holder,plinth - light grey
N.I.	1171121-00/5	1	1	Mat,Support,plinth
N.I.	50279682-00/4	1	-	Plaque,door (Speed Clip <b>WDF901SA</b> only)



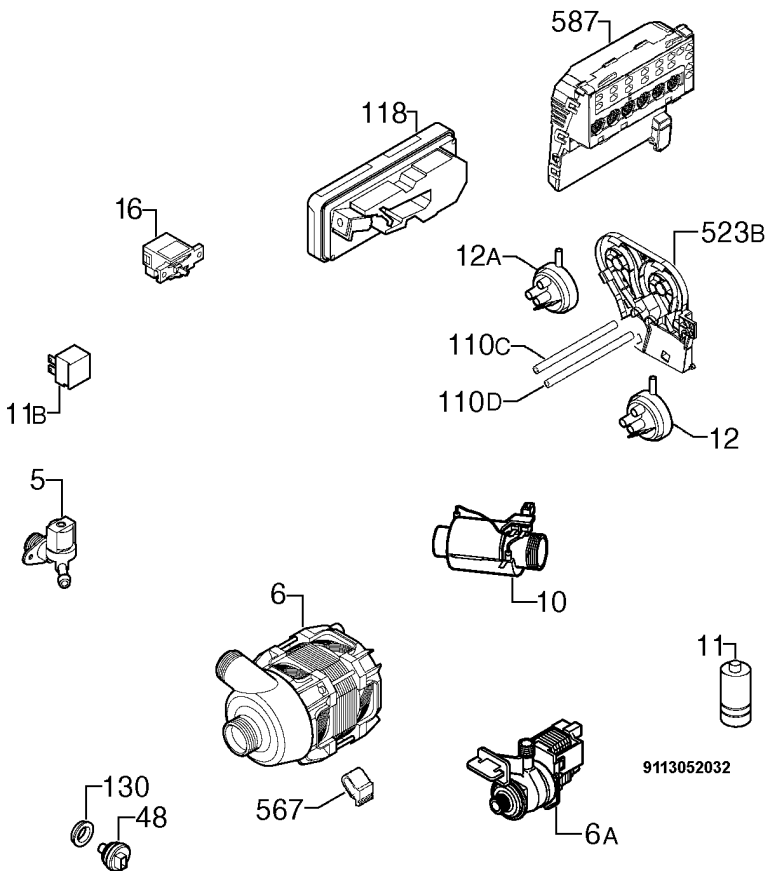


<b>MODELS</b>	<b>PNC</b>	<b>VAR</b>
<b>WDF901SA</b>	<b>911915304</b>	<b>00</b>
<b>WDF901WA</b>	<b>911915303</b>	<b>00</b>

**Exp View N°. P09113029831**

**PUMP, SUMP and HYDRAULICS ASSEMBLY**

ITEM	PART N°.	QTY	DESCRIPTION
110A	1526815-10/3	1	Tube,Container cup,fill valve x 280mm
110C	1525986-10/3	1	Tube,Container cup,sump
111	50278866-00/4	1	Feeder hose x 1500mm
112	1526492-42/4	1	Discharge pipe,complete x 2230mm
120	50297774-00/7	1	Drain filter,complete - light grey
120B	1524360-00/3	1	Filter - Inox
125A	50282650-00/6	1	O-ring,manifold,outer
125B	50227938-00/3	1	O-ring,manifold,inner
127	1118796-00/0	1	Pipe union,Y---d.= 32mm.
127B	1523118-20/4	1	Pipe union,manifold - dark grey
130A	1523119-01/2	1	Seal,Channel drainage
130B	8996461217706	1	O-ring,sump
130C	50659231-00/0	1	Round seal,Container cup
130E	1522802-00/6	1	Sealing strip
130F	1240151-00/9	1	Sealing
132	1118495-91/8	1	Column,Support,lower spray arm
135A	1526687-33/8	1	Channel drainage,silver,complete
139	1526523-20/2	1	Lower spray arm - silver
139A	1526520-21/6	1	Spray arm,upper - silver
140	1170481-13/7	1	Container cup,small,electronic
145	1528059-00/7	1	Manifold,outer,d= 32mm.
145A	1172023-01/0	1	Manifold,horizontal - dark grey
155	1527957-02/9	1	Water sump,pipe union,complete
303	1526292-09/7	1	Basement
320	1526272-10/7	1	Grill,vapour outlet - dark grey
520	1526862-00/6	1	Flange,discharge pipe
521	1527389-00/9	1	Stopper,drainage hose
527E	50286080-00/2	1	Nut,water distributor

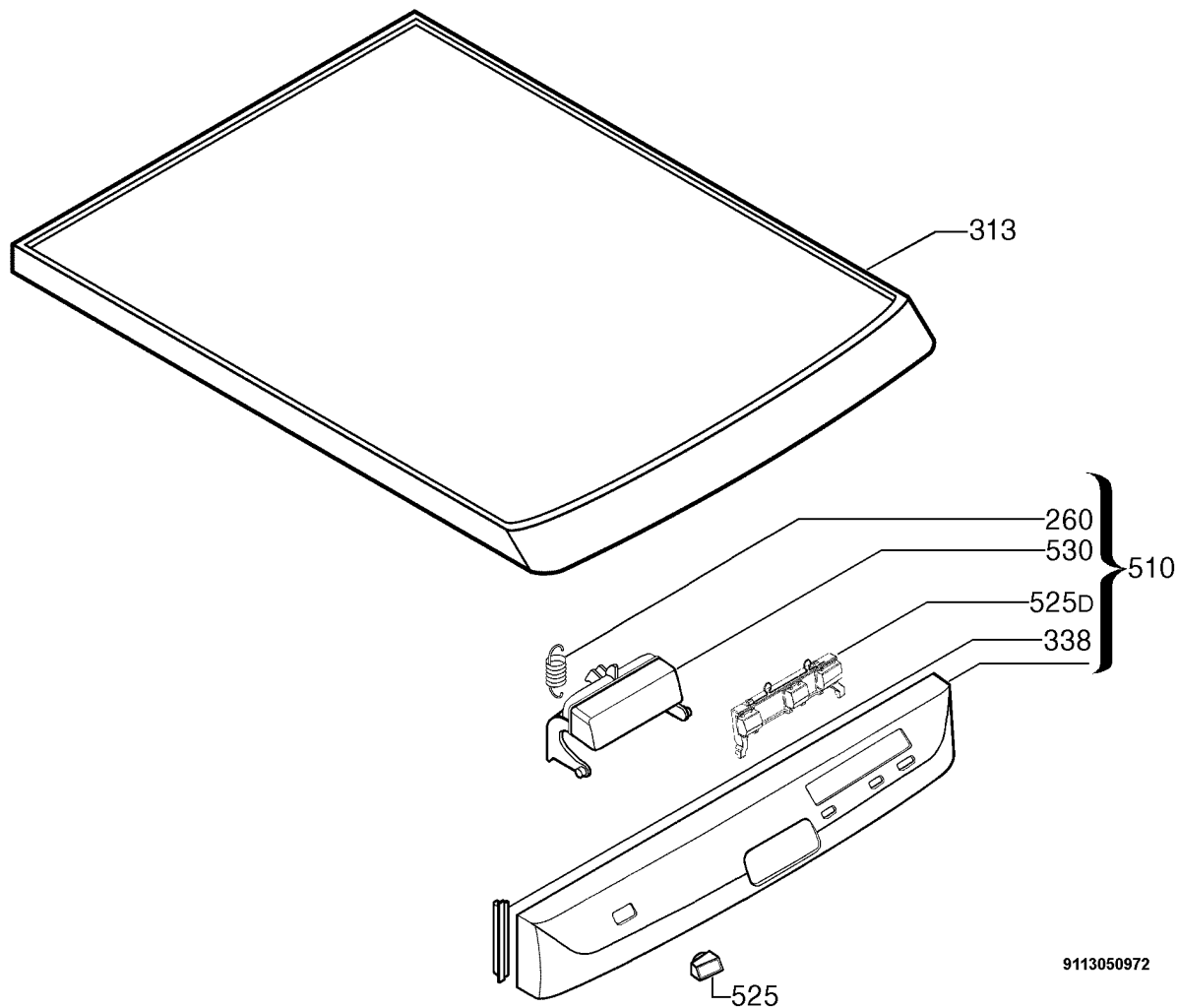


9113052032

<b>MODELS</b>	<b>PNC</b>	<b>VAR</b>
<b>WDF901SA</b>	<b>911915304</b>	<b>00</b>
<b>WDF901WA</b>	<b>911915303</b>	<b>00</b>

**Exp View N°. P09113052032**  
**ELECTRICAL COMPONENTS**

ITEM	PART N°.	QTY	DESCRIPTION
5	1170958-01/9	1	Fill valve
6	50299965-00/9	1	Washing motor,tachometric 2800 rpm
6A	50293177-00/7	1	Drain pump,50Hz
10	50297618-00/6	1	Heating element,230V/2000W -d.32mm
11	50287485-00/2	1	Running capacitor,shank
11B	1526204-02/7	1	Interference suppressor
12	1528189-02/8	1	Pressure switch,level,65/45
12A	1528189-12/7	1	Pressure switch,safety,123/98
16	1111433-60/1	1	Main switch,(O/I)
48	50299357-00/9	1	Temperature sensor
110C	1170450-41/3	1	Tube,pressure switch,safety x 515mm
110D	1170450-51/2	1	Tube,pressure switch,level x 525mm
118	50285882-00/2	1	Kit,dispenser,detergent
130	1118535-03/6	1	Sealing sleeve,temperature sensor
523B	1170351-00/9	1	Mount,pressure switch
567	1171934-01/9	1	Motor bracket,buffer
587	973911915303003	1	Configured electronic EDW1100
N.I.	1170705-24/6	1	Harness,complete
N.I.	1170862-31/0	1	Power cable,AUS/NZ



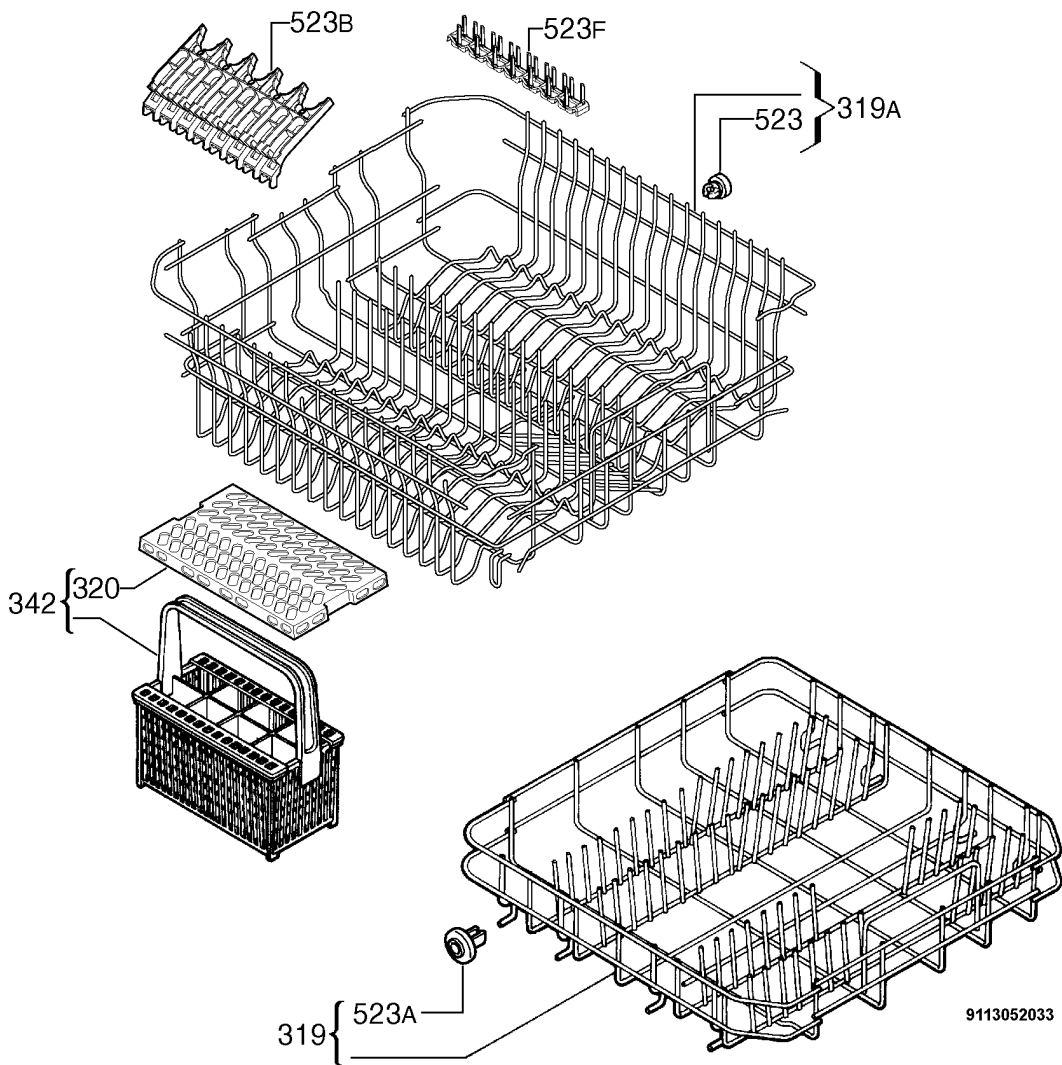
9113050972

<b>MODELS</b>	<b>PNC</b>	<b>VAR</b>
<b>WDF901SA</b>	<b>911915304</b>	<b>00</b>
<b>WDF901WA</b>	<b>911915303</b>	<b>00</b>

**Exp View N°. P09113050972**

**CONTROL PANEL and WORKTOP ASSEMBLY**

ITEM	PART N°.	SA	WA	DESCRIPTION
260A	1525773-00/6	1	1	Spring,handle,latch
313	1172536-20/1	1	-	Work top - Grey
	1172536-00/3	-	1	Work top - White
338	1525578-80/1	1	-	Side plate - Grey
	1525578-00/9	-	1	Side plate - White
510	1170804-30/4	1	-	Control panel,silkscreened,complete
	1170804-20/5	-	1	Control panel,silkscreened,complete
525	1170944-20/9	1	1	ON/OFF button
525D	1171107-20/2	1	1	Buttons,programmes - Grey
530	1170749-10/3	1	-	Handle,control panel - Grey
	1170749-00/4	-	1	Handle,control panel - White



9113052033

---

<b>MODELS</b>	<b>PNC</b>	<b>VAR</b>
<b>WDF901SA</b>	<b>911915304</b>	<b>00</b>
<b>WDF901WA</b>	<b>911915304</b>	<b>00</b>

**Exp View N°. P09113052033**

**BASKET ASSEMBLY**

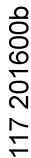
ITEM	PART N°.	QTY	DESCRIPTION
319	1529702-91/0	1	Dishwasher basket,bottom - dark grey
319A	1529657-72/6	1	Dishwasher basket,upper - dark grey
320	1525019-20/2	1	Grating,Cuttlery basket - dark grey
342	1525593-20/6	1	Cuttlery basket complete - dark grey
523	50286967-00/0	1	Wheel kit - dark grey (8 Pieces)
523A	50286965-00/4	1	Wheel kit - dark grey (8 Pieces)
523B	1527713-02/6	2	Support,cup - silver
523F	1528354-10/1	4	Support,measure cup - silver





## WIRING DIAGRAM & LEGEND

AA	Anti-flooding device
CO	Capacitor
DD	Detergent dispenser
EC	Water filling electric valve
ER	Resin conditioning water switch
IM	Microswitch, hinge right N/C
IP	Door switch
LI	Internal light
LS	Pilot lamp
MR	Terminal board
MV	Fan motor
PA	Anti-overflow pressure switch
PL	Washing pump
PS	Drain pump
PU	Keyboard
RL	Level regulator
RR	Heating element
SB	Sensor rinsing agent
SS	Salt sensor
ST	Temperature sensor
TAC	Tachometric generator
MAIN BOARD	Main electronic board
BEAMER	Door locked lamp
<hr/>	
AR	Orange
BI	White
BL	Blue
GI-VE	Yellow/Green
MA	Brown
NE	Black
RO	Pink
VI	Violet



## GENERAL CHARACTERISTICS

**DIMENSIONS:** Width - 60cm  
Height - 85cm  
Depth - 63.5cm

Power supply	->	230V / 50Hz (limits: 187-254V)
Total power absorption	->	2300W
Mains water supply	->	Pressure Min/Max 50 - 800kPa
Capacity	->	9/12 place settings

## **CONSUMPTION (ENERGY LABEL):**

- Water	->	14	Lt
- Energy	->	0.8	KW/h
- Duration of Cycle	->	170	Min

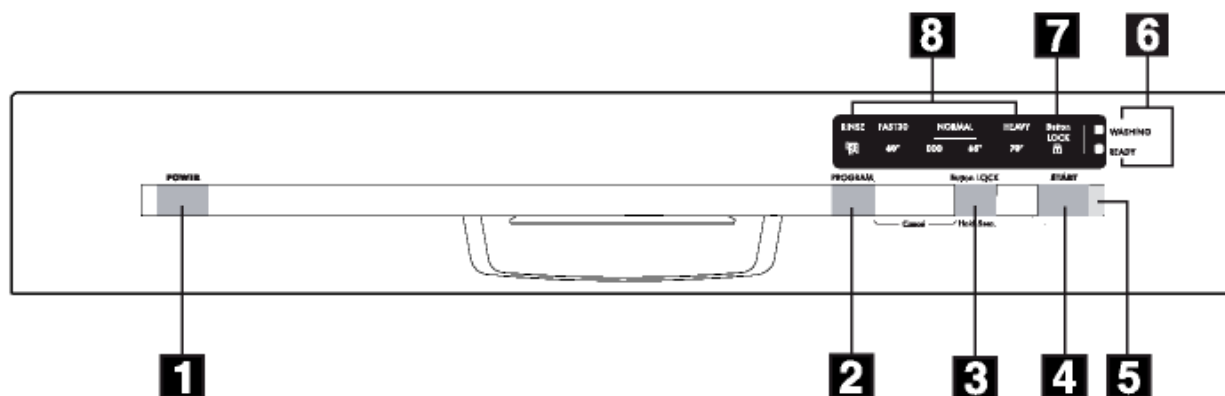
## **EDW1100 ELECTRONIC CONTROL SYSTEM:**

- ON/OFF	->	Two-pole	switch (separate from the electronic board)
- Selection of programmes/options	->	Button	actuated (min. 3, max. 6)
- Display	->	Display	with LED's

## **WASHING SYSTEM:**

Control of water level	->	Pressure switch + Software
Water heating	->	Tube-enclosed heating element
Temperature control	->	NTC temperature sensor
Type of drying	->	Active
Safety devices/Alarms	->	Total protection (hydraulic + Software)

## **CONTROL PANEL - WDF901SA - WDF901WA**



- 1 - On/off button (POWER)
- 2 - Program selection button (PROGRAM)
- 3 - Button lock button (Button LOCK)
- 4 - Start button (START)

- 5 - Start indicator light
- 6 - Indicator lights
- 7 - Button lock indicator light
- 8 - Program indicator light

## **INDICATOR LIGHTS**

**WASHING** - The indicator light comes on when the washing program operates and goes off when the washing program is completed.

**READY** - The indicator light comes on when the washing program is completed. It also has the auxiliary functions of alarm if the appliance has a malfunction.

**Button LOCK** - The indicator light comes on when the button lock function is active.

## **CONTROL PANEL - WDF901SA - WDF901WA (cont...)**

### **Button LOCK**

The button lock function locks all buttons on the control panel while the washing program is in operation.

Follow these steps to set the Button lock function:

1. Switch on the appliance.
2. Set a washing program.
3. Press the Start button to start the washing program.
4. Press button lock button for approximately 5 seconds, or until the button lock indicator light flashes.
5. Button lock indicator light flashes for approximately 15 seconds.
6. When the button lock function is active the indicator light is on with a static light.  
If you press a button while button lock function is on, an audible signal indicates that buttons are locked

At the end of a washing program the button lock function is deactivated by opening and closing the door or switching off the appliance.

Important! It is not possible to deactivate the button lock function while a washing program is in progress. To do this you must cancel the set program.

### **Setting mode**

The appliance is in setting mode when all the program indicator lights are on.

The appliance must be in setting mode to set a washing program.

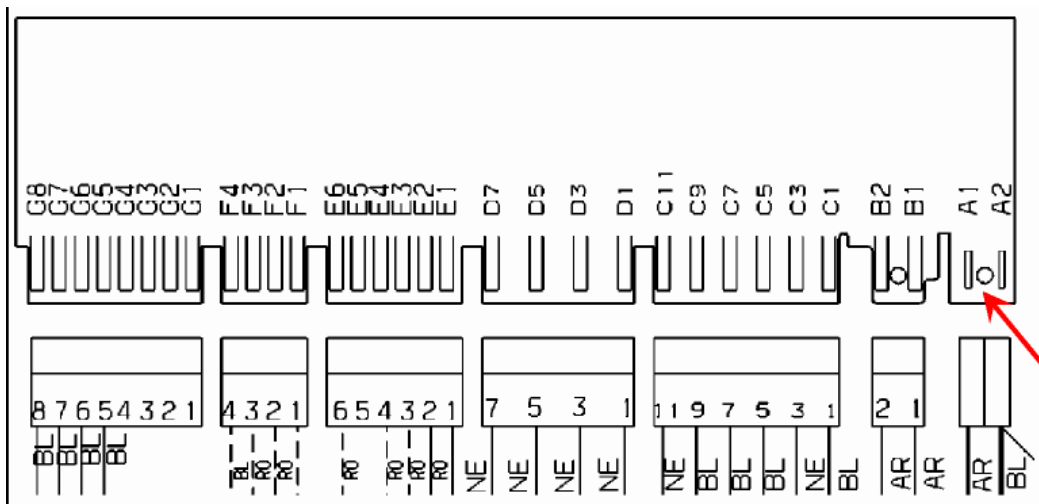
If a program light is on, cancel the program to go back to the setting mode. Refer to 'Select and start a washing program.

Program	Degree of soil	Type of load	Program description
RINSE	Any	partial load (to be completed later in the day)	1 cold rinse (to prevent food scraps to bond). Detergent is not necessary with this program
FAST 30 60° 1)	Normal or light soil	Crockery and cutlery	Main wash up to 60°C Final rinse
NORMAL ECO 2)	Normal soil	Crockery and cutlery	Prewash Main wash up to 50°C 1 intermediate rinse Final rinse Drying
NORMAL 65°	Normal soil	Crockery and cutlery	Prewash Main wash up to 65°C 1 intermediate rinse Final rinse Drying
HEAVY 70°	Heavy soil	Crockery, cutlery, pots and pans	Prewash Main wash up to 70°C 2 intermediate rinses Final rinse Drying

1) This is the perfect daily program to clean a partial load. Ideal for a family of 4 persons who only want to their load breakfast, dinner crockery and cutlery.

2) Test program for testing institutes.

## CHECKING THE EFFICIENCY OF THE COMPONENTS



Care should be taken relative to the position of connector "A1" - "A2": if this connector is replaced in the incorrect position (back-to-front), the appliance will not function. The board will not accept any commands since the power supply will be disconnected.

In order to facilitate the control procedure for the components to be tested, a TEST PROCEDURE has been created which indicates the point to which the probes of the tester should be applied and the correct theoretical value for each component tested.

- Remove the door and detach all the connectors from the main board.
- Connect the probes of the tester to the appropriate points on the connector. Compare the ohm ( $\Omega$ ) reading with the theoretical value.

LIST OF COMPONENTS	PROBE CONTACTS	CORRECT VALUES		NOTES
* POWER CABLE & (PU) - ON/OFF SWITCH	L«-»B1 N«-»A2	⇨ ⇨	0 $\Omega$ 0 $\Omega$	with ON/OFF key pressed
(RR) - HEATING ELEMENT + (TS) - SAFETY THERMOSTAT	A1«-»C5	⇨	25 $\Omega \pm 8\%$	connected in series (2100W)
(PR) - LEVEL PRESSURE SWITCH	B1«-»C5	⇨	INFINITE 0 $\Omega$	on "EMPTY" (1-2) on "FULL" (1-3)
(PA) - ANTI-FLOODING PRESSURE SWITCH	C1«-»A2	⇨	INFINITE 0 $\Omega$	on "EMPTY" (1-2) on "FULL" (1-3)
(IP) - DOOR MICROSWITCH	B2«-»D1	⇨	0 $\Omega$	Door closed
(DD/DB) - INTEGRATED DISPENSER	D5«-»D7	⇨	1.500 $\Omega \pm 8\%$	OK
(SB) - RINSE-AID SENSOR	F3«-»F4	⇨	INFINITE 0 $\Omega$	with Rinse-aid without Rinse-aid
(SS) - SALT SENSOR (N/A)	F1«-»F2	⇨	INFINITE 0 $\Omega$	with salt without salt
(ST) - TEMPERATURE SENSOR	G5«-»G6	⇨	4850 $\Omega \pm 5\%$ 1205 $\Omega \pm 5\%$	(at 25°C) (at 60°C)
(GT) - TACHOMETRIC SENSOR	E1«-»E2	⇨	210 $\Omega \pm 8\%$	OK
(MV) - FAN MOTOR (N/A)	D1«-»D3	⇨	7750 $\Omega \pm 8\%$	OK
(ER) - REGENERATION SOLENOID (N/A)	D1«-»C9	⇨	6 K $\Omega \pm 8\%$	OK
(EC) - FILL SOLENOID	D1«-»C7	⇨	3.400 $\Omega \pm 8\%$	
(PL) - WASH MOTOR	C11«-»C3	⇨	50 $\Omega \pm 8\%$	start-up winding
	To the two motor wires (blue) / (red)	⇨	180 $\Omega \pm 8\%$	auxiliary winding
(PS) - DRAIN MOTOR	C11«-»C1	⇨	180 $\Omega \pm 8\%$	OK

**Note: - \*) = Measurement points L and N refer to the pins of the plug fitted to the power cable.**

In the event that an abnormal situation should occur which might affect the correct operation of the appliance, the circuit board causes a safety system to intervene. In most cases, this interrupts the washing cycle. The last three alarm conditions are stored in memory.

Using a special procedure available only to Service Engineers, it is possible to read all the alarms stored in memory. However, only four current alarm conditions are displayed to the user.

The alarms are displayed by the display and with a series of "beeps" from the buzzer (only certain models).

## TABLE OF ALARMS

Type of alarm	No. flashes of READY LED and "beeps"	Displayed to the user	Description of the alarm condition	Machine status	Possible causes
i10	1	YES	Water fill time-out (The pressure switch does not close on FULL after 90 sec. static fill, or never closes on "FULL" during the initial 60 sec of the dynamic fill at 2800RPM)	The drain pump switches on, then the cycle stops	Tap closed; water mains pressure too low; fill solenoid / wiring faulty; hydraulic circuit of pressure switch obstructed; level pressure switch / wiring faulty; circuit board faulty (solenoid triac short-circuited)
i20	2	YES	Water drain time-out (The pressure switch does not return to EMPTY after two drain phases lasting 120 seconds) (**)	The drain pump switches on, then the cycle stops	Drain circuit obstructed/blocked; drain pump interrupted or jammed (foreign bodies); level pressure switch blocked on FULL (1-3); hydraulic circuit of pressure switch obstructed; wiring faulty; circuit board faulty.
i30	3	YES	Intervention of Anti-flooding system (the drain pump switches on)	The cycle is interrupted and the drain pump switches on	Water leakage from the tub - sump and various connections (pump, upper spray arm duct etc.); floating sensor blocked mechanically; microswitch faulty; fill solenoid blocked mechanically; circuit board faulty (solenoid triac short-circuited); wiring faulty.
i50	5	YES	Motor triac short-circuited (the washing pump runs uncontrolled at maximum speed)	Water fill to level (if necessary), deactivation of the other actuators, cycle interrupted. The washing motor runs at maximum speed and the alarm is displayed.	Circuit board faulty.
i60	6	YES	<b>Overheating</b> - Temperature higher than 78°C	The cycle stops and the drain pump switches on.	Heating element faulty; Safety thermostats (open); Wiring faulty; NTC sensor (thermal contact faulty); Scarce circulation of water in the tub; Wash pump faulty (damaged impeller) Main electric board faulty.
		NO	<b>Heating Time-out</b> (the check takes place every 3 min: the temperature must increase by a certain amount at each step)	The programme continues to the end without heating (the washing result will probably be unsatisfactory)	Heating element faulty; intervention of safety thermostats (open); wiring faulty; NTC sensor (poor thermal contact); insufficient water circulating in the tub; washing pump faulty (impeller stripped); circuit board faulty.

(\*\*) If inside the appliance there is no water at all (correct drain) but this alarm is displayed, check the heater (possible dispersion) and the anti-interference suppressor.

**TABLE OF ALARMS (cont...)**

Type of alarm	No. flashes of READY LED and "beeps"	Displayed to the user	Description of the alarm condition	Machine status	Possible causes
i70	7	NO	<b>NTC sensor short-circuited or open</b>	The programme continues to the end without heating (the washing result will probably be unsatisfactory)	NTC sensor faulty; wiring short-circuited / open; circuit board faulty.
i80	8	NO	<b>Communication error between the microprocessor and the EEPROM</b>	Machine inoperative: no selection possible (*)	Circuit board faulty.
i90	9	NO	<b>Problems with software configuration</b>	The fault occurs when switching on: no selection possible (*)	Circuit board faulty (configuration software incorrect).
ib0	11	NO	<b>Problems with the turbidity meter</b> [if featured] (Calibration Time-out)	The programme continues as if a "heavy soiling" condition had been detected.	Turbidity sensor faulty; sensor wiring faulty; circuit board faulty.
id0	13	NO	<b>Problems with the washing motor: no signal from the tachometric generator</b> (washing pump powered, but no signal from the generator)	The heating element is switched off. If the fault persists after the Time-out, the washing pump operates at maximum speed and the alarm code is stored in memory (the cycle continues)	Motor winding interrupted / short-circuited; motor jammed (foreign bodies); wiring to washing motor faulty; motor capacitor faulty; Tachometric generator interrupted / short-circuited; circuit board faulty.
iF0	15	NO	<b>Water replenishment Time-out</b> (3 times during the T.S. Time-out)	The cycle continues until the next phase without supplementary fills and without heating. The error is cancelled on completion of a drain phase.	Dishes upside-down; central filter clogged; excessive foam; leaks from the sump-pressure switch coupling; pressure switch faulty / false contacts.

(\*) If it is not possible to access diagnostics mode, switch the appliance off and then on again to check that this is not caused by a temporary fault. Before replacing the circuit board, check that it is correctly powered by controlling the following

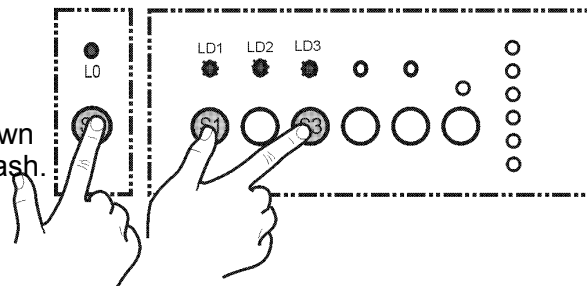
- Continuity of the power cable
- Correct operation of the suppressor
- Closure of the door switch contacts
- Continuity of the wiring between connectors A2/B1 on the circuit board and the suppressor.

## DIAGNOSTICS MODE / OPTIONS

A single procedure can be used by Service Engineers to access the diagnostics system. After accessing diagnostics mode, the Engineer can: read / cancel the alarms, check for correct operation of the various components of the appliance, start the diagnostics cycle and select the options available to Service Engineers.

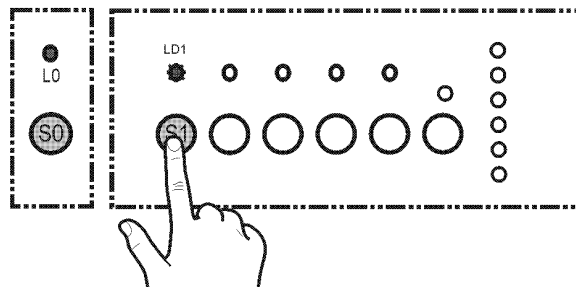
### ACCESSING DIAGNOSTICS MODE

1. Switch off the appliance.
2. Press buttons **[S1-S3]** simultaneously and hold down.
3. Press key **[S0]** to switch the appliance on, still holding down buttons **[S1-S3]** until LED's **[LD1, LD2 and LD3]** begin to flash.



### READING THE ALARMS AND ACTIVATING THE INDIVIDUAL COMPONENTS

1. Access diagnostics mode (as above)
  2. Press button **[S1]** to start the function.
- ↪ LED's **[LD2]** and **[LD3]** switch off; **[LD1]** continues to flash.




- ↪ The first alarm stored in memory is displayed.

**End of cycle** LED starts flashing.

3. Press **[S1]** to display the other two alarms and to activate the electrical components.

- ↪ The LED's show, after the first three alarms, the number corresponding to the activated function.
4. All the positions can be repeated by pressing sequentially **[S1]**.

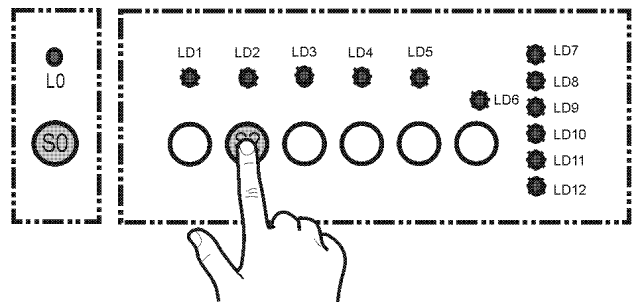
Activation <b>[S1]</b>	LED flashes	Activated function
1	1	-» Reading of the last alarm occurred
2	2	-» Reading of the last alarm but one occurred
3	3	-» Reading of the last alarm but two occurred
4	4	-» Activation of the solenoid regeneration
5	5	-» Activation of drain pump
6	6	-» Water fill solenoid to level
7	7	-» Heating ( <i>only if water level is OK!</i> )
8	8	-» Washing pump at 2800 RPM
9	9	-» Detergent/rinse-aid dispenser
10	10	-» Drying fan ( <i>if turbo-dry</i> )
 <p><i>The components are powered when the door is closed: open the door to select a different component then re-close the door. If button <b>S1</b> is not pressed for 60 seconds, the system automatically exits diagnostics mode).</i></p>		



## CANCELLING ALARM CODES FROM MEMORY / TESTING THE LEDS

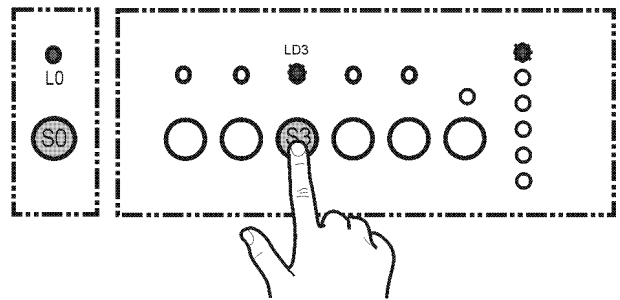
It is good practice to cancel the alarm codes after reading the alarm code or after effecting repairs to check whether it is repeated during the diagnostics test.

1. Access diagnostics mode (as per Page 24)
2. Press button **[S2]** to cancel the alarms.
  - ↪ All the LED's flash for about 30 seconds.
  - ↪ The function terminates automatically and the machine enters pre-selection mode.



## SELECTING THE CYCLE

1. Access diagnostics mode (as per Page 24)
2. Press button **[S3]** to start the cycle.
  - ↪ The LED's **[LD1, LD2]** switch off while **[LD3]** continues to flash while the LED of the current phase is steady.
  - ↪ The display shows the time-to-end.
  - ↪ The programme the programme behaves as in a normal cycle; the PAUSE and CANCEL options are accessible.



## CONSUMPTION VALUES

PROGRAM	DURATION (in minutes)	ENERGY (in kWh)	WATER (in litres)
RINSE	12	0.1	4
FAST 30 60°	30	0.9	9
NORMAL ECO	90 - 95	0.8 - 0.88	11 - 12
NORMAL 65°	95 - 105	1.4 - 1.6	19 - 21
HEAVY 70°	110 - 120	1.8 - 2.0	23 - 25

## OPTIONS AVAILABLE TO SERVICE ENGINEERS

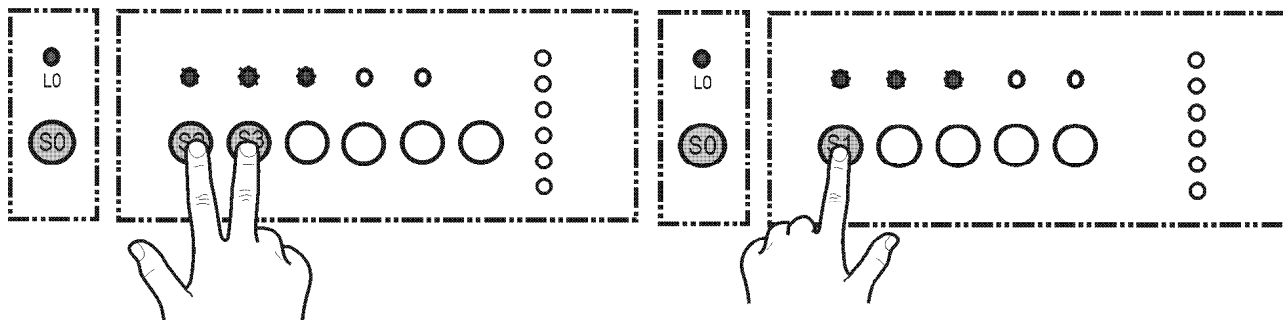
In particular circumstances, i.e. if the user reports unsatisfactory washing results, a special procedure, available only to Service Engineers, can be used to select two supplementary options designed to improve performance:

- Extra cold rinse.
- Disabling of pulse washing (**PW**), replaced by continuous washing (**Ctrl**).

## SELECTING THE EXTRA COLD RINSE OPTION

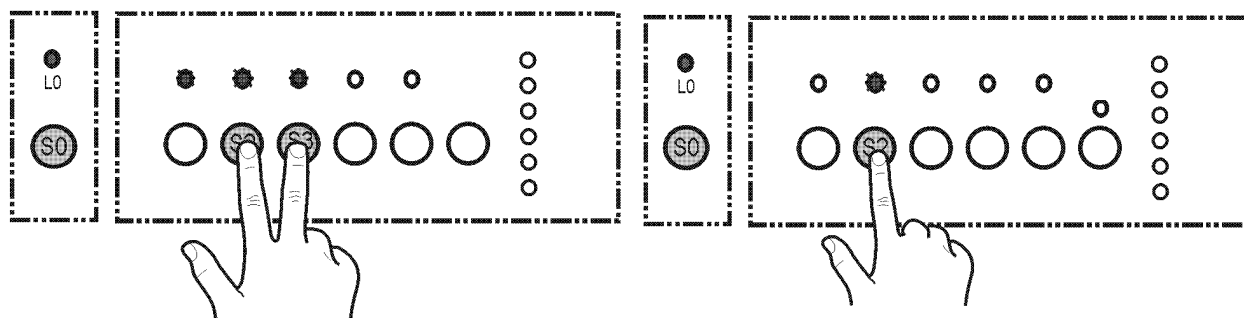
Using the procedure described below, it is possible to add a supplementary cold rinse in all the washing programmes. This improves the quality of rinse in case of necessity.

1. Access diagnostics mode (as per Page 24)
2. Press button **[S1-S2]** simultaneously.
3. Press **[S1]** to activate and deactivate this function.
  - ↪ If the end of cycle **LED** is switched off, the extra rinse is not selected.
  - ↪ If the end of cycle **LED** is lit, the extra rinse has been selected.
  - ↪ Press **[S1]** to activate and deactivate this function
4. To store the operation in memory: press the **[S0]** button and switch the appliance off; alternatively, wait for 60 seconds (appliance in programme selection mode).



## DISABLING PULSE WASHING

Certain programmes use the pulse washing system (**PW**). Using the procedure described below, the Service Engineer can modify this system so that (**Ctrl**) (continuous) washing is used in all the programmes which normally use the (**PW**) system. This intensifies the washing action even in delicate programmes.



1. Access diagnostics mode (as per Page 24)
2. Press buttons **S2-S3** simultaneously till LD2 starts flashing:  
The End of cycle **LED** indicates the status of the function:
  - ↪ If the end of cycle **LED** is switched off, the continuous washing system is used.
  - ↪ If the end of cycle **LED** is lit, the pulse washing system is used.
3. Press button **S2** to activate and deactivate this function.
4. To store the operation in memory: press key **[S0]** and switch off the appliance or wait 60 second.

## EXITING DIAGNOSTICS MODE

1. To exit the diagnostics cycle, press key **[S0]** and switch the appliance OFF. or:
2. Wait **60 seconds**: the appliance returns to programme selection mode.