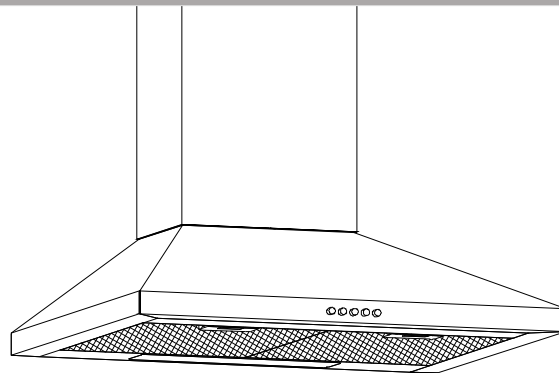




Cooker Hood

Model EIS-B-RH60-S02 EIS-B-RH90-S02



InstructionBook



Information and advice

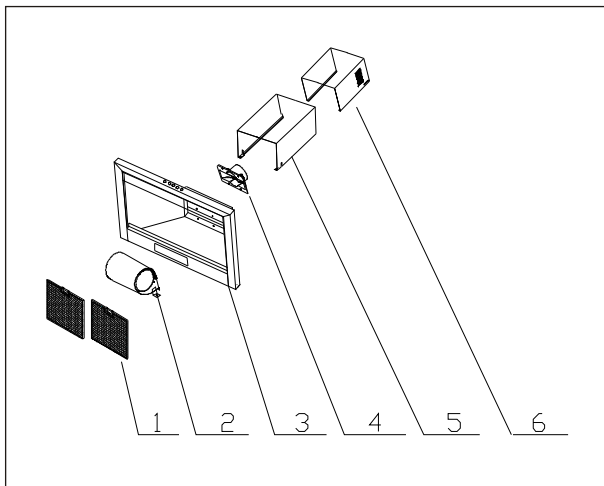
In certain circumstances electrical appliance may be a danger hazard.

- A) There shall be adequate ventilation of the room when the cooker hood is used at the same time as appliances burning gas or other fuels.
- B) Do not check the status of the filters while the cooker hood is operating.
- C) Do not touch the light bulb within half an hour after appliance use.
- D) Do not flambe under the cooker hood.
- E) Avoid opening gasometer when there is no pan on the stove , as it is damaging for the filters and a fire hazard
- F) Constantly check food frying to avoid that the overheated oil may become a fire hazard.
- G) Disconnect the electrical plug prior to any maintenance.
- H) Regulations concerning the discharge of air have to be fulfilled.
 - I) When the range hood and appliances supplied with energy Other than electricity are simultaneously in operation.
The negative pressure in the room must not exceed 4 Pa (4×10^{-5} bar)
- J) This appliance is not intended for use by persons (including children) with reduced physical, sensory or mental capabilities, or lack of experience and knowledge, unless they have been given supervision or instruction concerning use of the appliance by a person responsible for their safety.
- K) Children should be supervised to ensure that they do not play with the Appliance.
- L) Attention! Observe the warning in the instruction sheet concerning the operation of the appliance when air is discharged from the room.



Know your cooker hood

Please read these instructions Before using your cooker hood



1.Filter assembly

3.Main body assembly

5.Outside chimney

2.Air duct assembly

4.Damper flap

6.Inner chimney

Also included * **Damper flap*** **Chimney fixed bolster**

***Drill hole stencil** **User instructions**

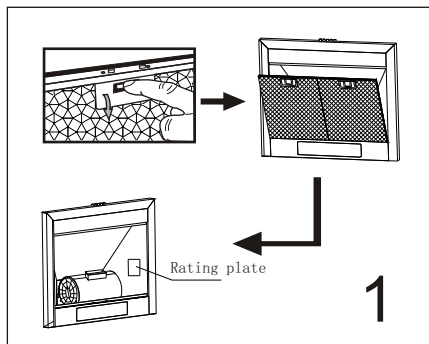


Information

Congratulations on the purchase of our Cooker hood, which is designed to include many superior features that permit you the fullest expression of your living. Before installing and/or using the cooker hood carefully read all the instructions.

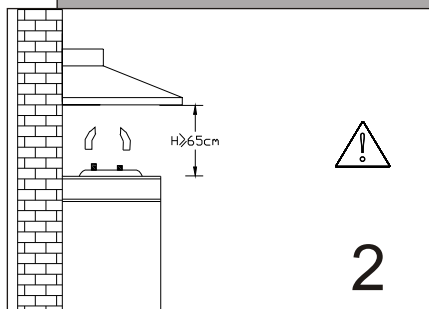


Information and advice



1

Check voltage and Frequency given on the rating plate located on the inside of the hood.



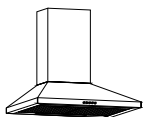
2

We recommend that after installation the bottom of the hood should be no less than 650mm and no more than 750mm above the stove's heating elements and burners.



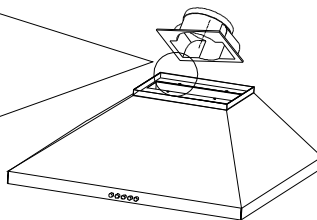
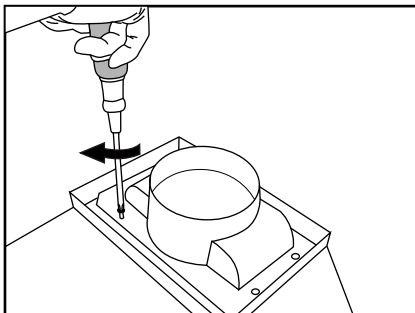
Information

The air must not be discharged into a flue that is used for exhausting fumes from appliances burning gas or other fuels (not applicable to appliances that only discharge the air back into the room)



Installation

Ensure the power has been turned off before beginning this installation.



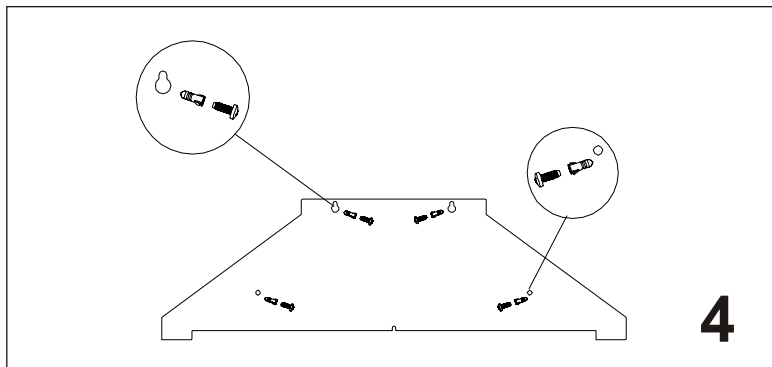
3



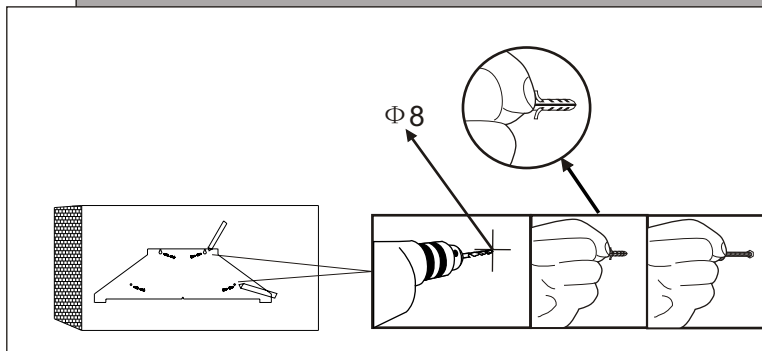
Information

Connect universal hose, easy selecting the venting direction

Before installing the cooker hood, please first fix the damper flap on the air outlet of the hoods.

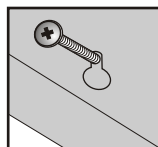
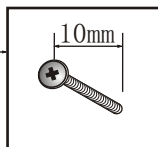
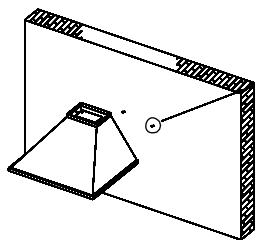


According to the Fig.4, make sure the position of the hoods on the wall. Then use the stencil to drill four $\Phi 8$ holes on the wall. Fix four sets expanding plugs and screws aimed at the four holes.



Information

When cutting or drilling into wall or ceiling, do not damage electrical wiring or other hidden utilities.



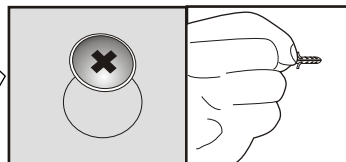
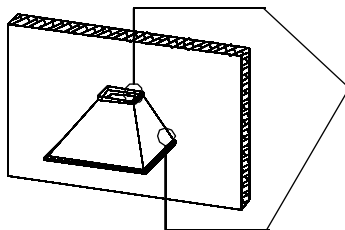
6

Hang the hood and let its 4 installation holes aim at 4 screws, adjust it to setting position.



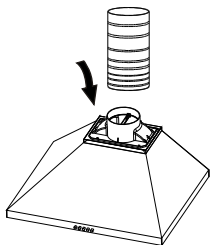
Information

Please make sure the outside dimension of the screws is 10mm.



7

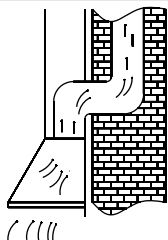
Screw down the four screws. first screw down the upper two screws, then screw down the nether two screws.



8

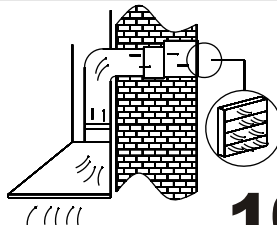
Connect the hose with the air duct.

The cooker hood is fully convertible for different venting direction.



9

Vertical is the most common. If your kitchen has an attic space above, the ducting may be run up through the cupboard and attic to a roof cap.



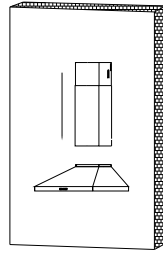
10

If your kitchen has a soffit above the cupboards, you may run the duct up into the soffit and then discharge horizontally through the outside wall to a wall cap.



Information

The air must not be discharged into a flue that is used for exhausting fumes from appliances burning gas or other fuels.



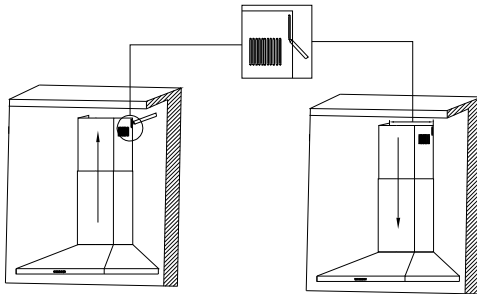
11

Put the outer chimney on the windshield, fix it on the air chamber with Phillips head screwdriver.



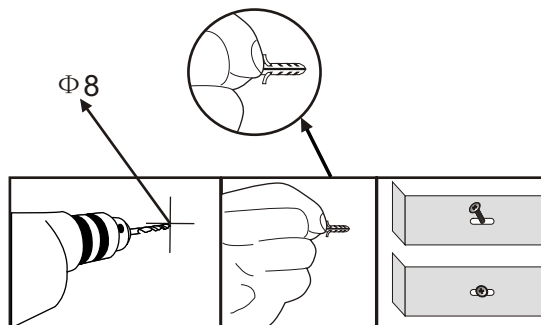
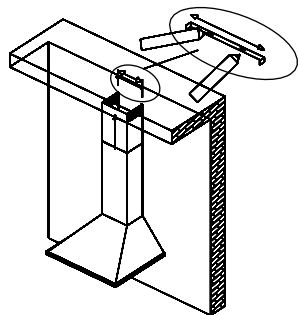
Information

Installation work and electrical wiring must be done by qualified person(s) in accordance with all applicable codes and standards, including fire-rated construction.



12

According to the dimension of the chimney fixed bolster, make sure the position of the two chimneys.



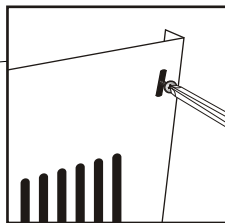
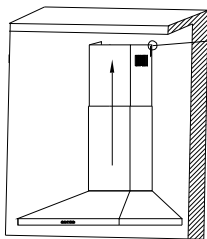
13

Install the chimney fixed bolster on the corresponding position on the wall.



Information

To install this hood you will require two assistants



14

Use the Screw
ST4*10 to connect
the chimney fixed
bolster and the
upper chimney

Controls



15

Press the switch of light to be on, the left and right bulbs light on. Otherwise the bulbs don't work. When press the push button **1** on, the motor runs at low speed. When press the push button **2** on, the motor runs at middle speed. When press the push button **3** on, the motor runs at high speed. When press the push button **0** on, the motor stops running.



Information

Do not touch the light bulb within half an hour after appliance use.

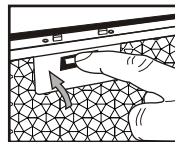
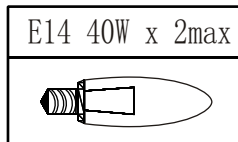
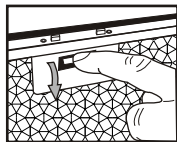
The lamp shall not be covered with thermal insulation or other material



Replacement and maintenance

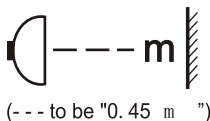
If the supply cord is damaged, it must be replaced by the manufacturer or its service agent or a similarly qualified person in order to avoid a hazard.

Replacing lamp



16

1. Take the fixed lamp rim off by unscrewing it in an anti-clockwise direction.
2. Draw the old lamp out of the lamp holder, insert the new lamp in the lamp holder.
3. Screw the fixed lamp rim tightly in a clockwise direction.



Required min. distance to surfaces (such as lids, oven cloth or the like) in order to prevent hot parts and fire hazards.

17

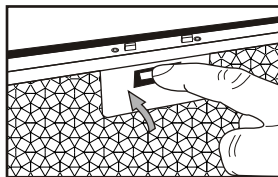
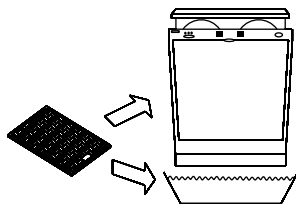
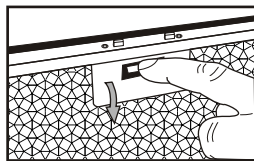


Only self shielded lamps can be used in order to prevent undue hot parts, fire hazards and exposure to UV radiation.



Information

The power of bulb must not be more than 40W.



- It is recommendable to clean the metallic filter every three months by carrying out the following instructions:

- Remove the metallic filter from the cooker hood and wash it in a solution of water and neutral liquid detergent, leaving to soak

- Rinse thoroughly with warm water and leave to dry.

- The metallic filter may also be washed in the dishwasher.

The metallic filter may alter in color after several washes.

This is not cause for customer complaint nor replacement of metallic filter.




Information

There is a fire risk if cleaning is not carried out in accordance with the instructions.

The manufacturer shall decline all responsibility if the foregoing recommendations and instruction regarding installation, maintenance and use are not observed and respected when using the cooker hood.

- - - - -

Correct Disposal of this product	
	<p>This marking indicates that this product should not be disposed with other household wastes throughout the EU. To prevent possible harm to the environment or human health from uncontrolled waste disposal, recycle it responsibly to promote the sustainable reuse of material resources. To return your used device, please use the return and collection systems or contact the retailer where the product was purchased. They can take this product for environmental safe recycling.</p>
